



SMART CITY



SAFE CITY



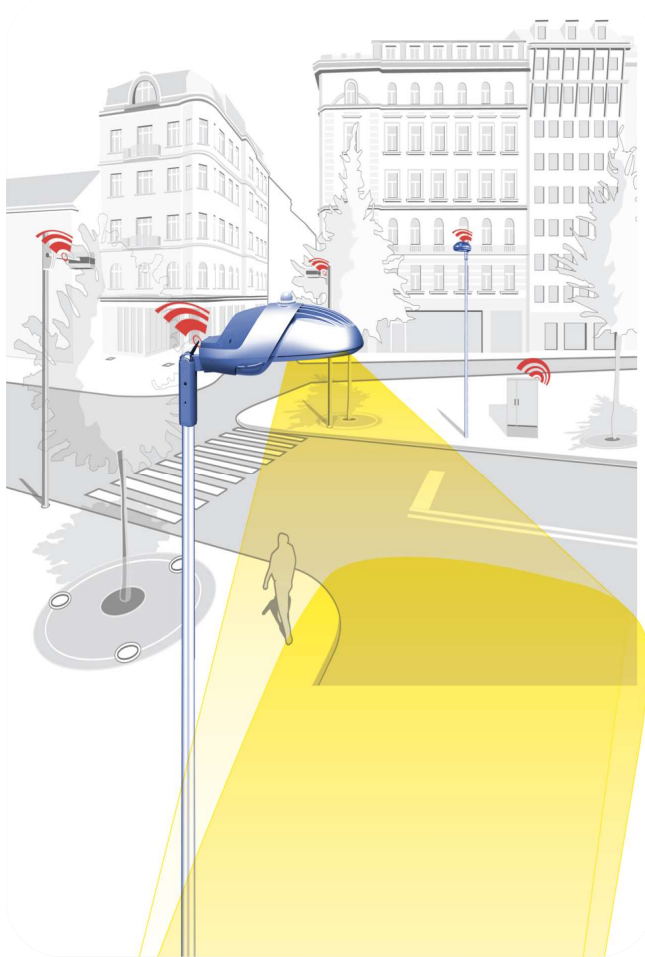
VIDEO SECURITY

**SECURITY  
AND BEYOND!**



**OWLS AG**  
Industriering 14  
LI - 9491 Ruggell  
T +423 392 5464  
[office@owls-ag.com](mailto:office@owls-ag.com)  
[www.owls-ag.com](http://www.owls-ag.com)

# OWLS CONCEPT



OWLS uses existing street lighting infrastructure to provide

- Adequate LED lighting
- CCTV surveillance
- Video security / analytics
- Customized solutions

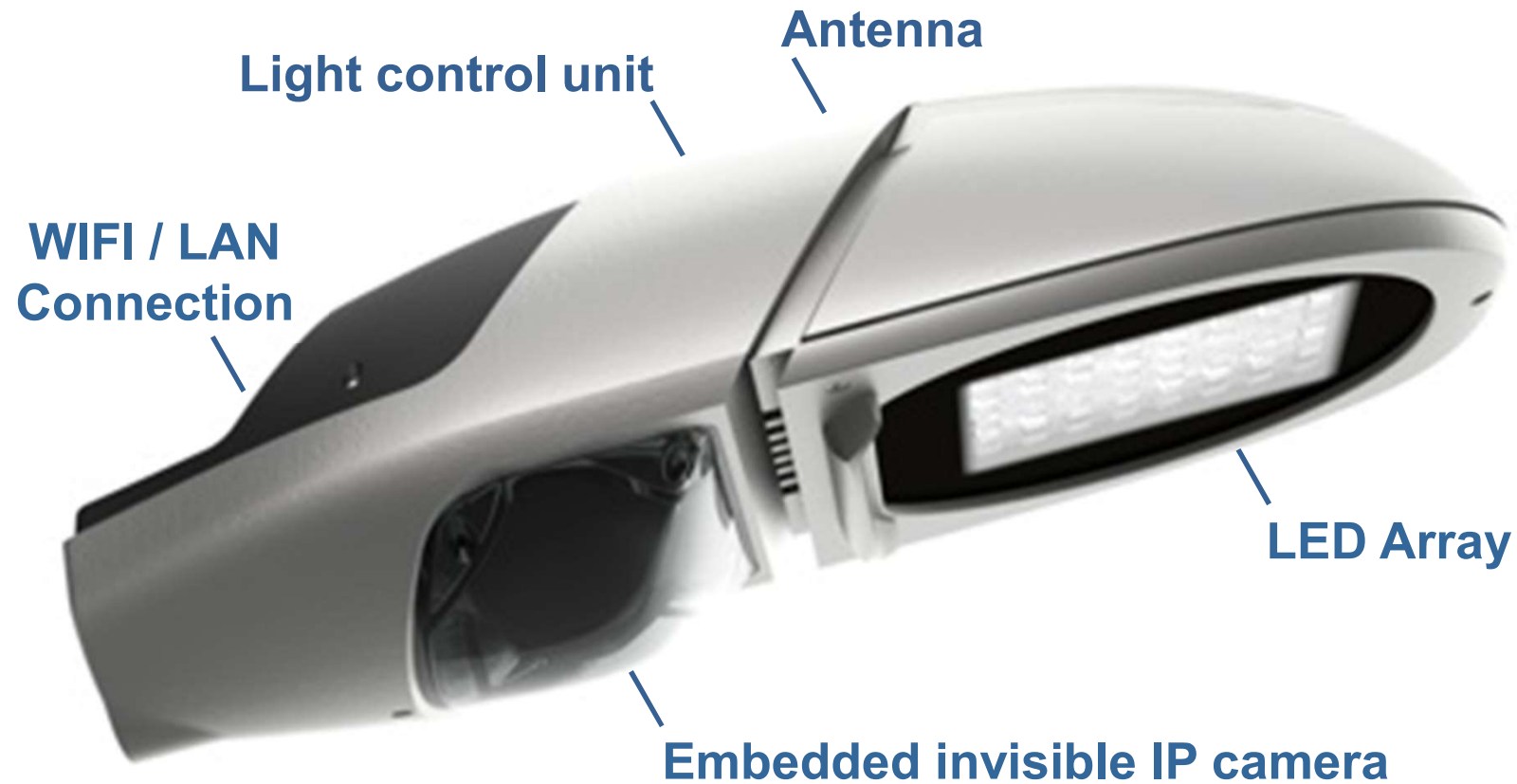


**"All-in-One"**



# OWLS **ALL-IN-ONE** SOLUTION

---



# OWLS **ALL-IN-ONE** SOLUTION

---

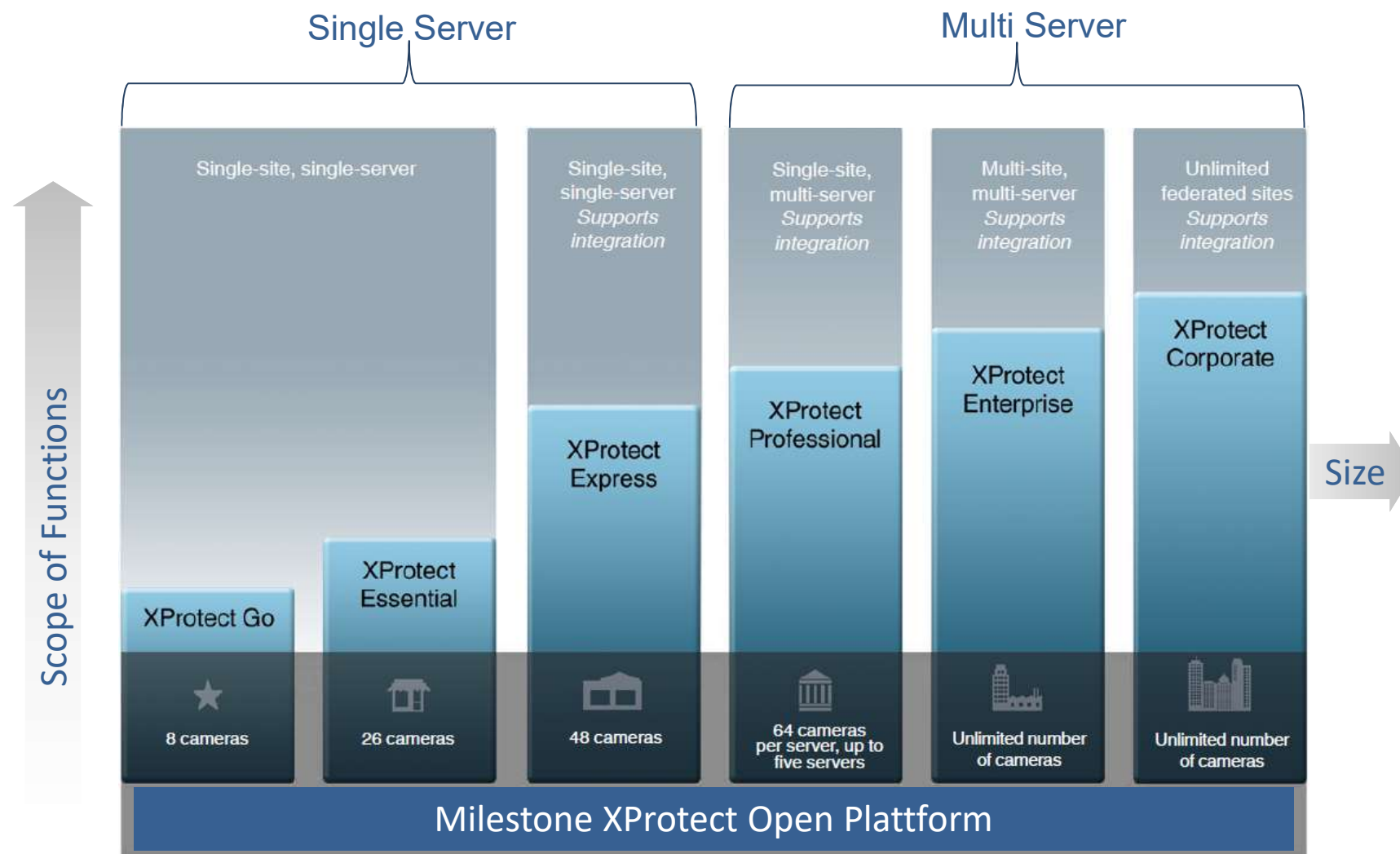
## **CUSTOMIZED** to suit your needs

- **Project planning & engineering**
- **Equipment & hardware**
- **Video management**
- **Video security / analytics**
- **Value-added services on demand**

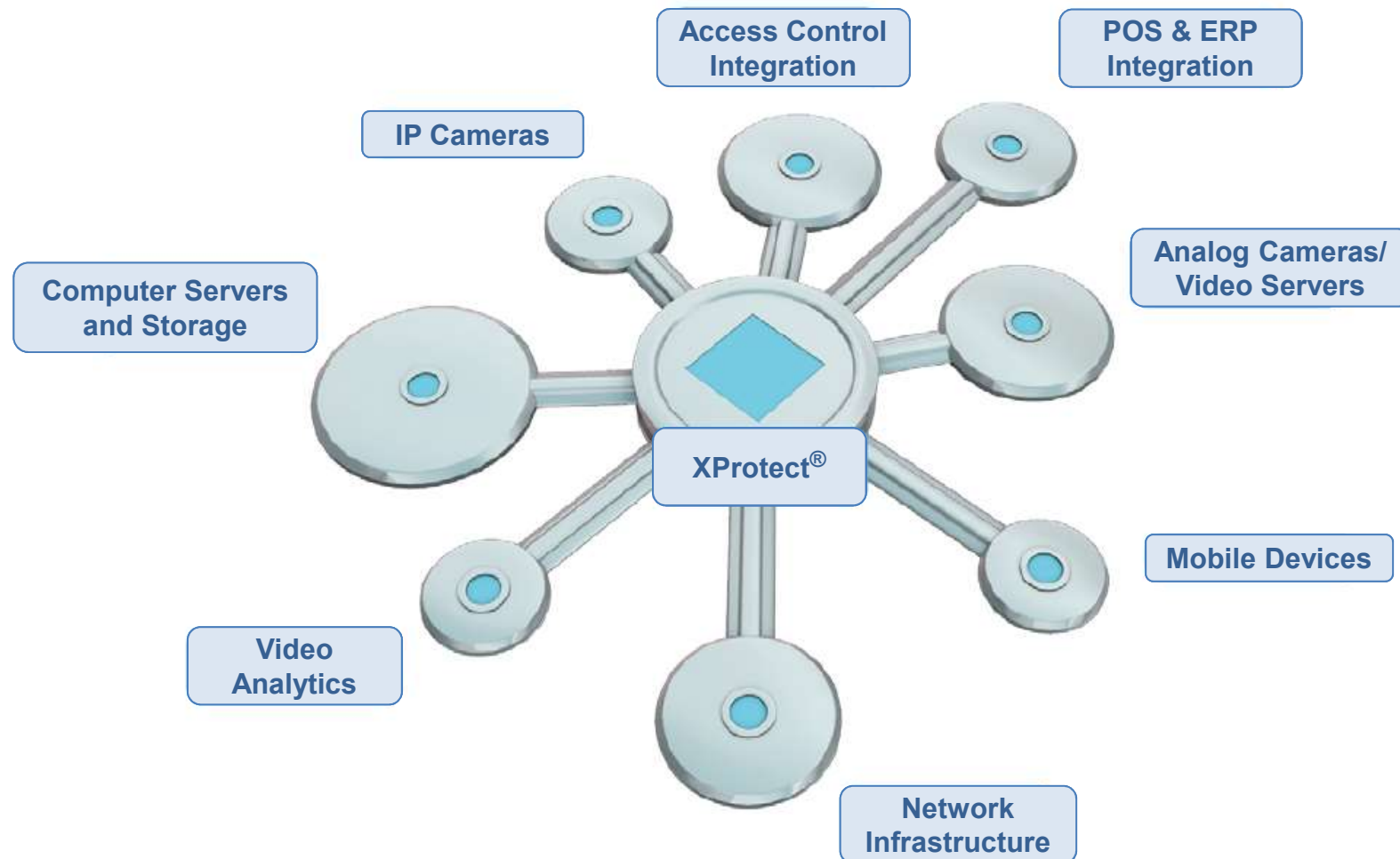
Get the **"MORE"** out of your street lighting!



# VIDEO MANAGEMENT SYSTEM



# VIDEO MANAGEMENT SYSTEM



Milestone XProtect Open Platform



# VIDEO ANALYTICS

---

## areal security

rules:  
intrusion  
speed  
forbidden  
direction  
loitering

areal<sup>vis</sup>

## privacy protection

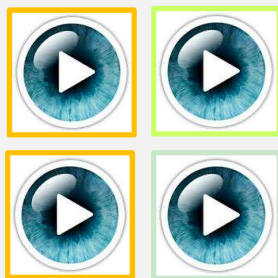
scrambling of:  
moving persons  
moving objects  
defined regions

anonym<sup>vis</sup>

## counting

using:  
CCTV  
3D sensor  
live statistics  
heatmap  
reports  
traffic plugin

count<sup>vis</sup>



## license plate recognition

to:  
prevent losses  
parking management  
regulate access  
evidence collection

LPR

## Face detection

face<sup>vis</sup>





# VIDEO ANALYTICS

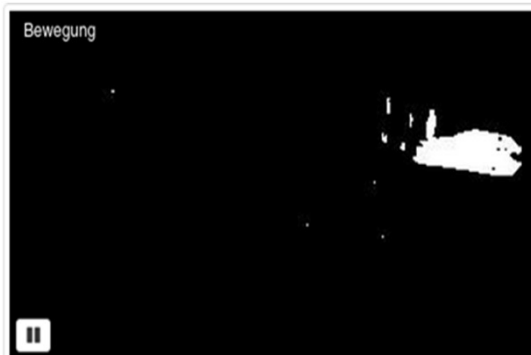
## areal security

rules:  
intrusion  
speed  
forbidden  
direction  
loitering

areal<sup>vis</sup>

## Person / object detection for indoor / outdoor

- Configurable in a few steps
- Flexible perspective system
- Flexible rule and zone settings
- Flexible event/alert system
- Minimum false alarm rates
- 24/7 reliability





# VIDEO ANALYTICS

privacy protection  
scrambling of:  
moving persons  
moving objects  
defined regions

anonym<sup>vis</sup>

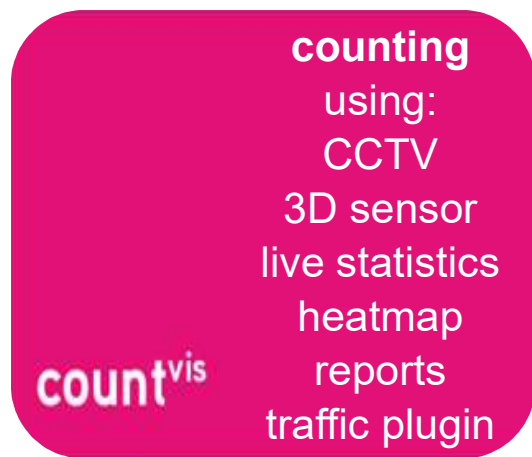


Live motion scrambling



# VIDEO ANALYTICS

---



## Counting application using camera or 3D sensor for indoor and outdoor use

- Accurate and reliable with flexible deployment options:
  - Person or object counting
  - Heatmapping
  - Occupancy monitor
  - LPR stat plugin
- Mobile use possible
- Clear display options
- Flexible report system



# VIDEO ANALYTICS

license plate recognition  
to:  
prevent losses  
parking management  
regulate access  
evidence collection

**LPR**

Automatic vehicle detection an add-on software product that helps automate and optimize tasks.

The screenshot displays the Milestone XProtect Smart Client 2013 R2 interface with the LPR (License Plate Recognition) module active. The top navigation bar includes 'Live', 'Playback', 'Sequence Explorer', 'Alarm Manager', and 'LPR'. The main window is divided into several sections:

- Search Bar:** A search field containing 'area451'.
- Filters:** A row of filters including 'All', 'All country codes', 'All LPR cameras', and 'All license plate lists'.
- Table:** A table with columns 'Number', 'Country', 'Time', 'LPR Camera', and 'List Match'. It contains three entries for 'AREA451' from the US, with the second entry (2:48:26 PM 1/21/2014) highlighted in blue.
- Video Feed:** A live video feed showing a blue car with license plate 'AREA451'.
- Timeline:** A timeline at the bottom of the video feed showing the current time as 2:48 PM on 1/21/2014.
- Details Panel:** A panel on the right showing the license plate 'AREA451', the country 'US', and the location 'Glenrock Entry List'.

Number	Country	Time	LPR Camera	List Match
AREA451	US	9:51:33 PM 1/21/2014	LPR Cam	Entry List
AREA451	US	2:48:26 PM 1/21/2014	LPR Cam	Entry List
AREA451	US	8:19:21 PM 1/18/2014	LPR Cam	Entry List



# VIDEO ANALYTICS

---



Face detection with semi-automatic scene adaption for indoor and outdoor use

Grouping of equal faces

Sort faces by their quality

Black / White List

Allows communication with 3rd party systems  
e.g. feedback of selected faces to the system



# WHY TO BUY OWLS ALL-IN-ONE SYSTEMS

---

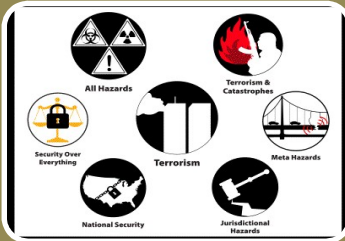


- up to **100,000 hrs LIFETIME** (20+ YEARS)
- up to **80% SAVINGS** IN POWER CONSUMPTION
- highly **REDUCED MAINTENANCE COSTS**
- latest **STATE-OF-ART TECHNOLOGY**
- made in **EUROPE** or AUDITED COUNTRIES
- with in-house made **VIDEO ANALYTICS**
- **Patent** registered
- OWLS as **SINGLE SOURCE SUPPLIER**
- lifetime **PARTNERSHIP**



# TARGET GROUPS

---



## Homeland Security Projects

e.g. police, military, government, border security ...



## Industrial Projects

e.g. for oil and gas industry, harbours, airports, logistic centres, car dealers ...



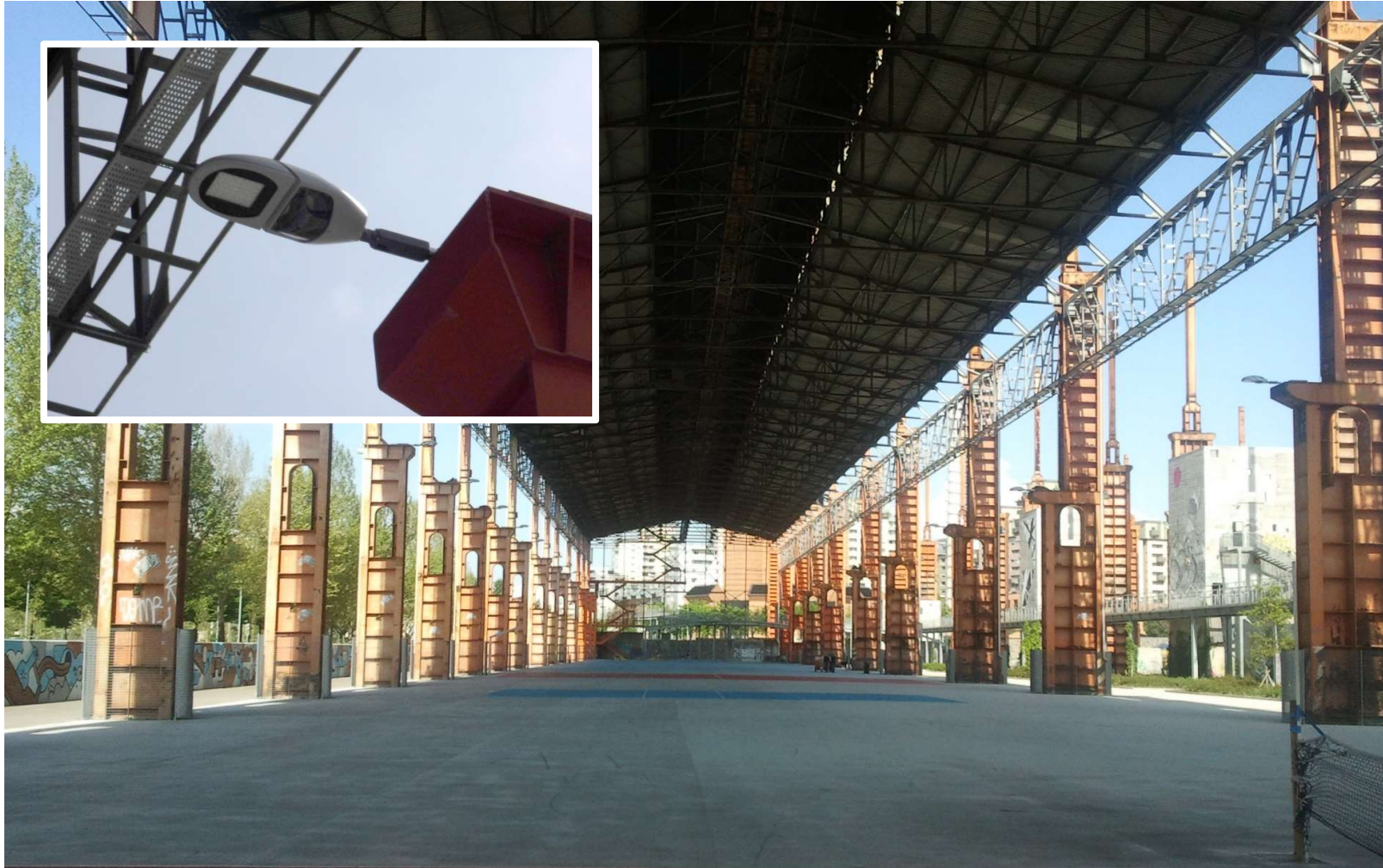
## Community Projects

Value added services for cities and communities



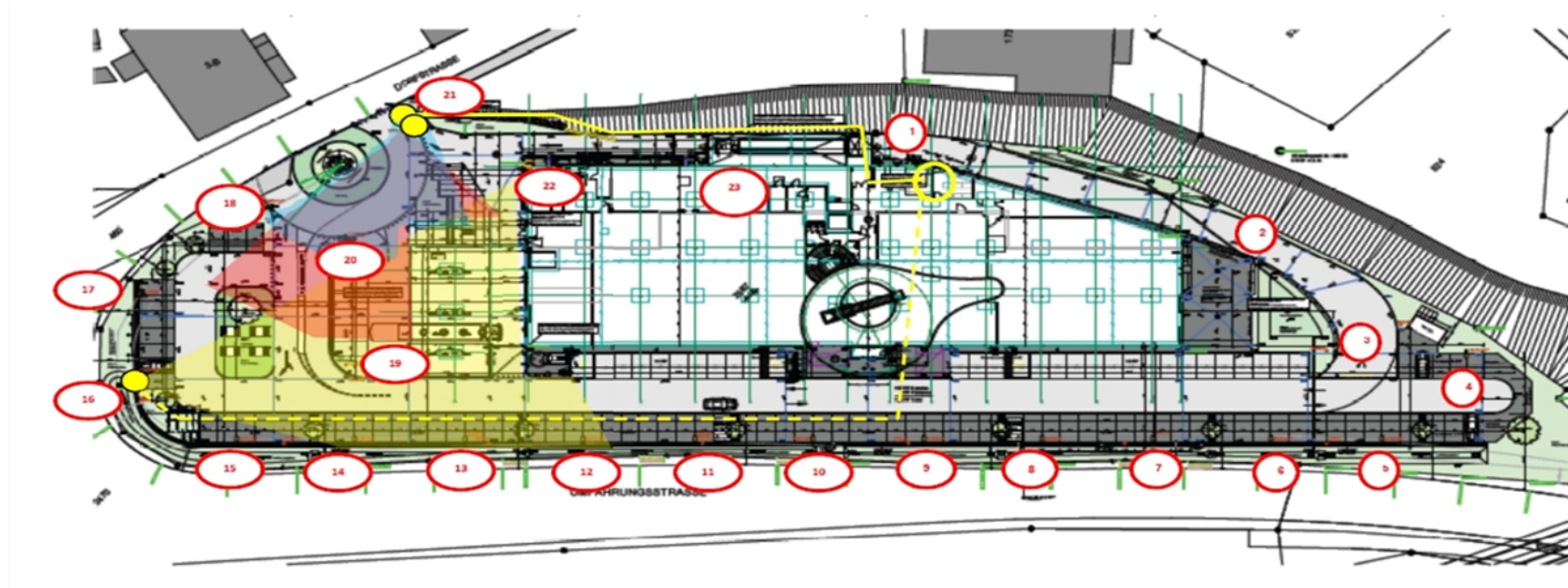
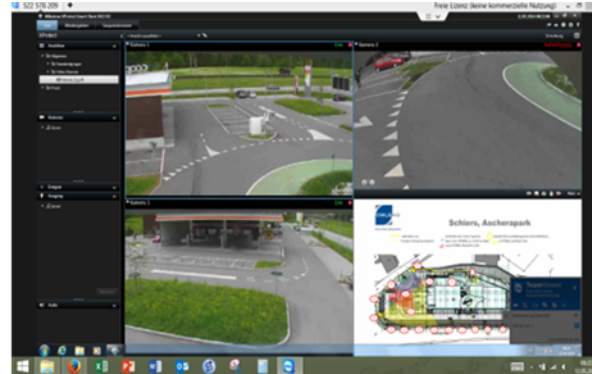
# PARCO DORA / TORINO, ITALY

---





# SHOPPING MALL / SCHIERS, SWISS

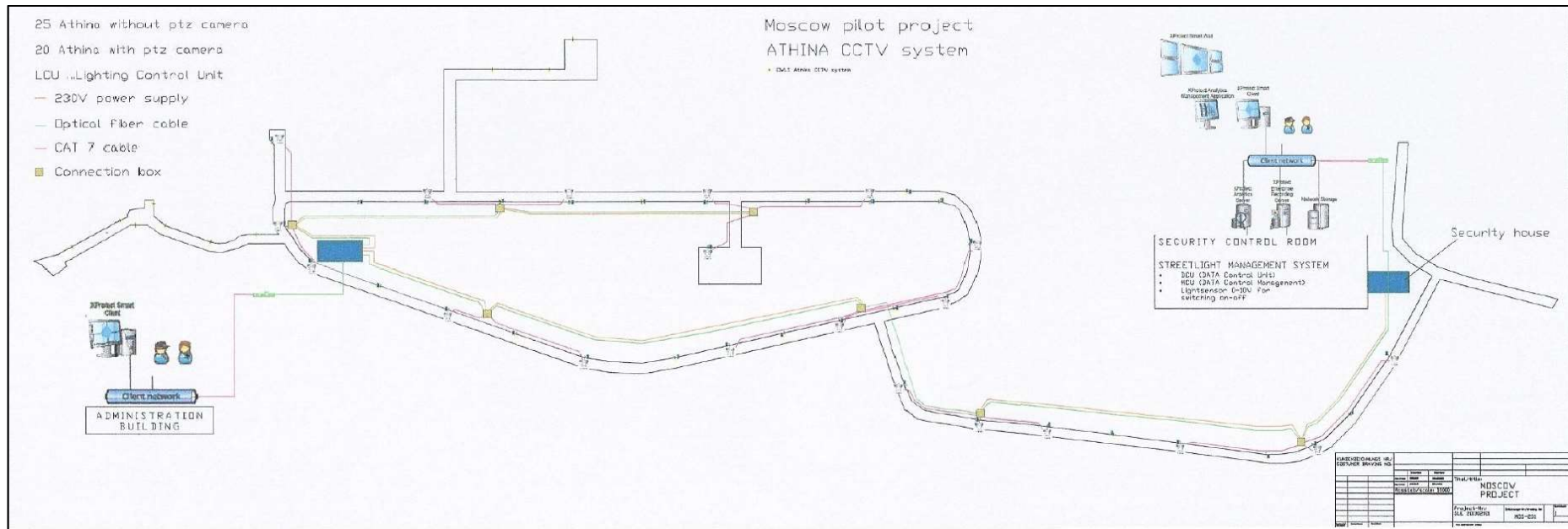


# VEGETABLE MARKET / DOHA, QATAR





# GATED COMMUNITY / MOSCOW, RUSSIA



# CASINOS AUSTRIA

---

face<sup>vis</sup>



## Scenario

Analyse for best faces found during the check in process.

## Solution

face<sup>vis</sup> was adapted for the check-in software of the Casinos Austria. The check-in personnel selects the **face of the day** of the particular guest directly within the Casinos Austria check in software.

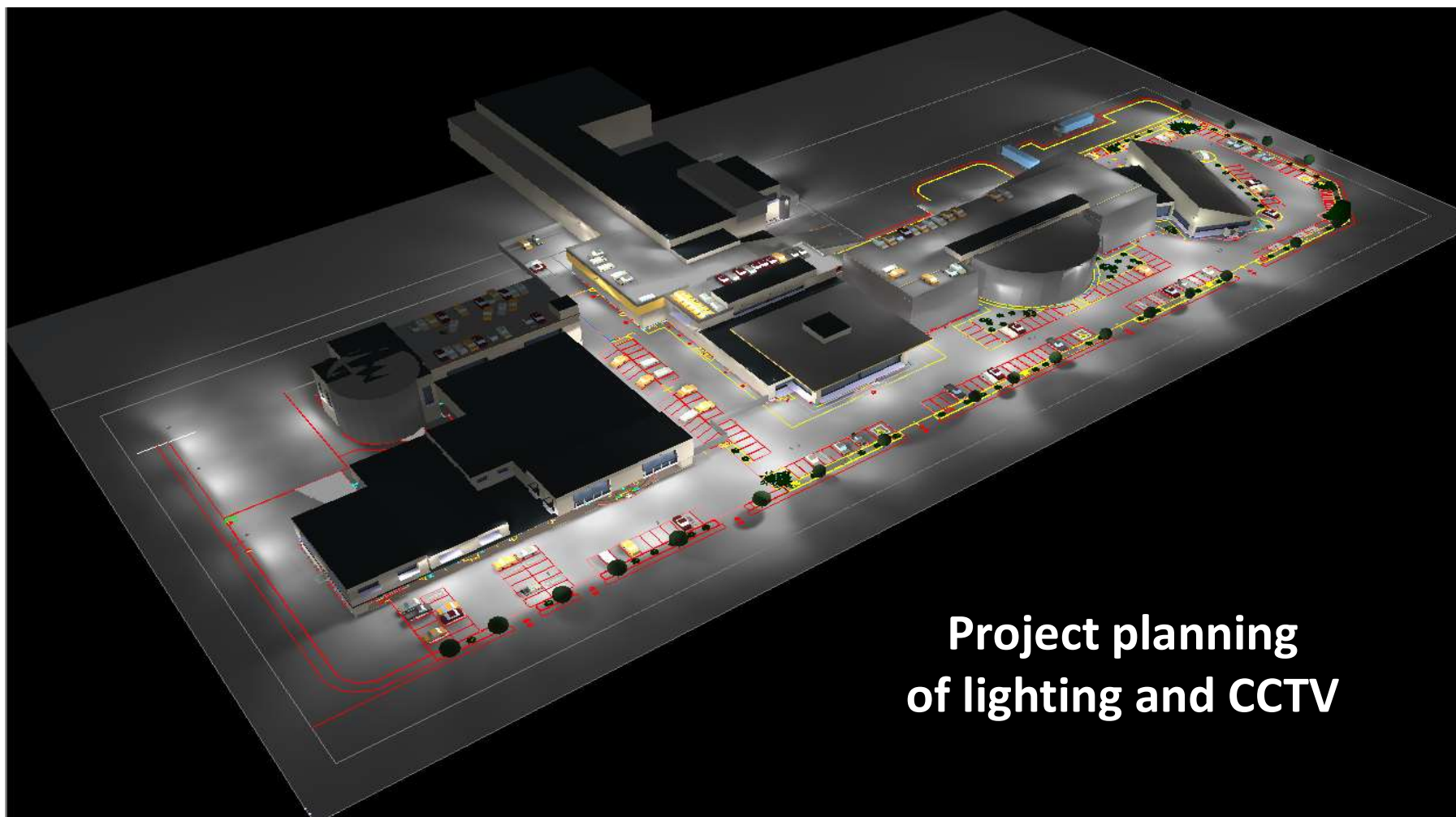
## Benefit

Improved service and security due to an up-to-date face database.

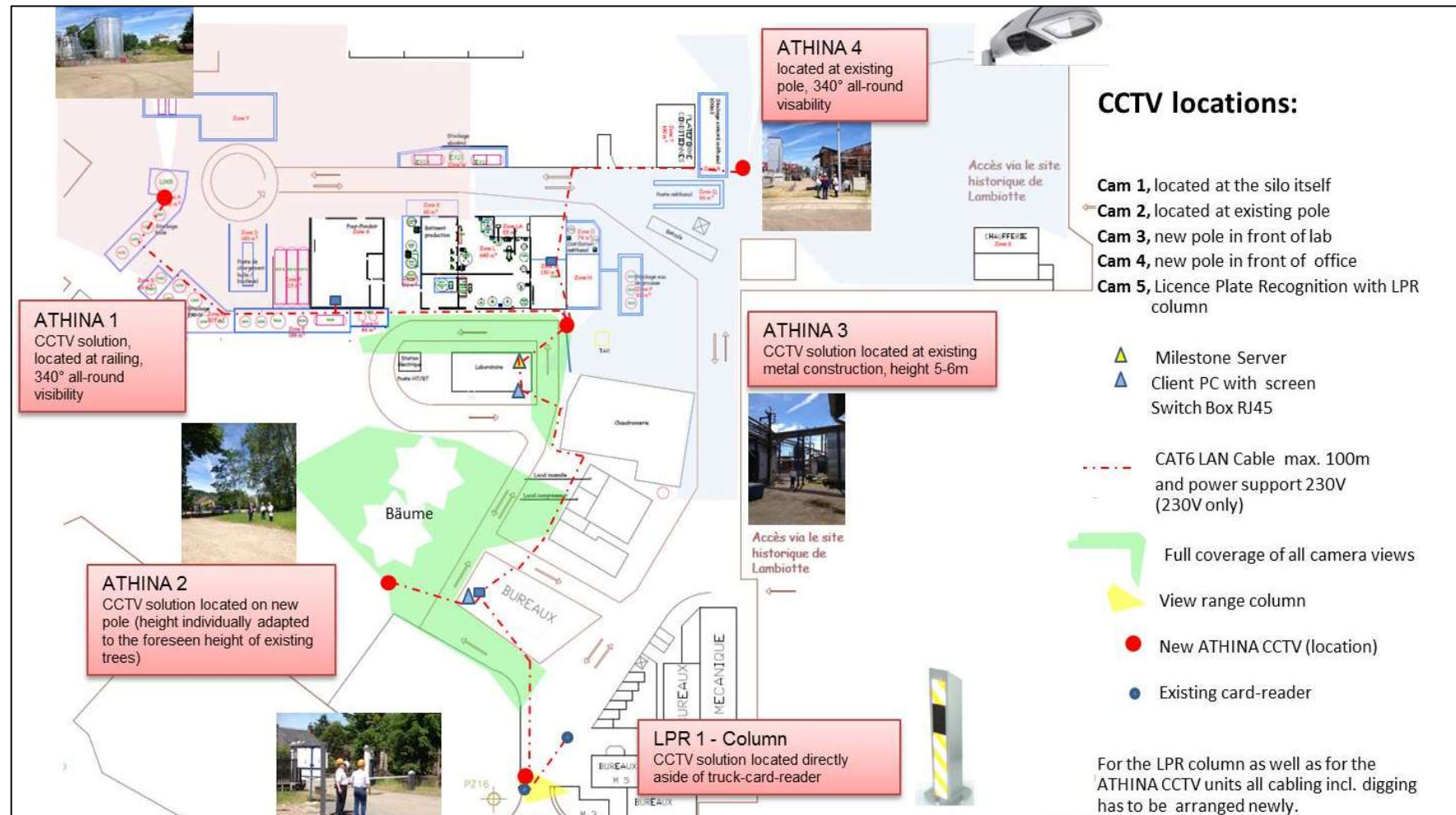


# CASE STUDY CAR CENTER / MILANO, ITALY

---



# CASE STUDY INDUSTRIAL PLANT / PREMERY, FRANCE







THANK YOU

FOR YOUR ATTENTION!



OWLS AG  
Industriering 14  
LI - 9491 Ruggell  
T +423 392 5464  
office@owls-ag.com  
www.owls-ag.com